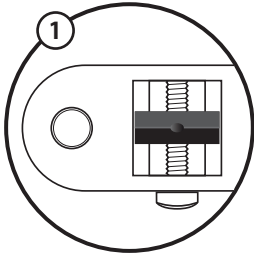
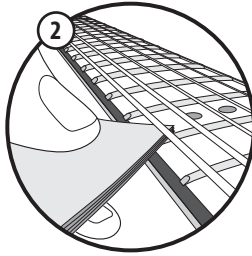


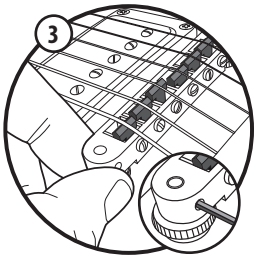
## TONEPROS BRIDGE INSTALLATION INSTRUCTIONS



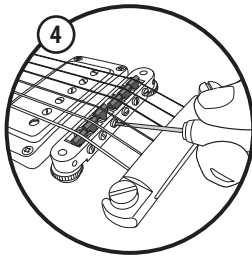
**STEP 1.** Set the intonation "starting point" by turning the intonation screws so that each saddle is close to the center of the bridge. Tune your guitar to concert pitch.



**STEP 2.** To determine correct string height, measure the gap between the top of the twelfth fret and the bottom of the low E string. It should be around 3mm/.118"; or about a stack of 12 business cards if you don't have a ruler. For the high E string, the gap should be around 2mm/.079"; or about a stack of 8 business cards.



**STEP 3.** To adjust your string height, adjust the two thumb wheel screws up or down until correct string height is achieved. Tune guitar to concert pitch after each adjustment. If you are using a SuperBridge or a Tonepros bridge, you can now lock the two set screws with the appropriate allen key (see inset).



**STEP 4.** The fretted 12th position of a string should match its 12th fret harmonic (lightly touch the string right above the 12th fret and pluck). Adjust the intonation screw with a screwdriver. Shortening the distance between the saddle and nut will increase the pitch of the harmonic; increasing the distance lower the pitch. Retune to concert pitch after each adjustment. Repeat for each string.

**NEED HELP?** Contact **GRAPH TECH GUITAR LABS** at 604-940-5353, via e-mail at [sales@graphtech.com](mailto:sales@graphtech.com), or consult our website at [www.graphtech.com](http://www.graphtech.com)